



File Preparation for Eagle Print

PLEASE NOTE: If you are an IBM based customer, we can only accept PDF files!

1. All pages should be built to correct size, for both final size and live image area. If your publication requires a full bleed, please add an additional .25" to your copy. All pages should be consistent throughout.
2. All copy should be centered on the page, without registration marks.
3. Images and photos should be saved as either CMYK(for color) or grayscale(for black & white) ***RGB images will not print out correctly!** (please see enclosed photoshop settings).
4. Photos should be scanned at a maximum of 300 DPI, and saved as TIFF images when possible.
5. Embed ALL fonts.
6. To ensure proper reproduction of files we recommend making a POSTSCRIPT file (from QuarkXpress, INDesign, etc) and using the PS file to make your PDF.(please see enclosed Adobe Acrobat Distiller settings)
7. If you receive PDF's from outside agencies, please preflight them to ensure they were made correctly.
8. Eagle Print currently uses the following naming convention:

Two letter abbreviation-mmdd-1.PDF

Example:

The Delphos Herald
DH-0306-1.PDF

If saving your entire publication as one PDF file, your page # would be 1.
If your publication has multiple sections, a letter prefix will need to be used.

Example:

DH-0306-A1.PDF

(XX)-(MMDD)-(letterprefix+page #).PDF

If saving your files as separate pages use the example above to label your pages.

9. To place your files to our in-house FTP site, please compress(stuff) all files into a common folder. PC customers will need to use "FTP Voyager" or "Coffee Cup" software to place files on the FTP. Mac customers will need to use "Fetch" software(fetchworks.com) or "Cyberduck" software(apple.com)

Eagle Print FTP
Host: 63.84.52.156
User Name: eagle
Password: eagle

ACROBAT DISTILLER 5.0 SETTINGS

JOB OPTIONS:

Double click on the Distiller icon to start the program.

Always check the Job Options settings before sending any files.

Click on Settings then Job Options.



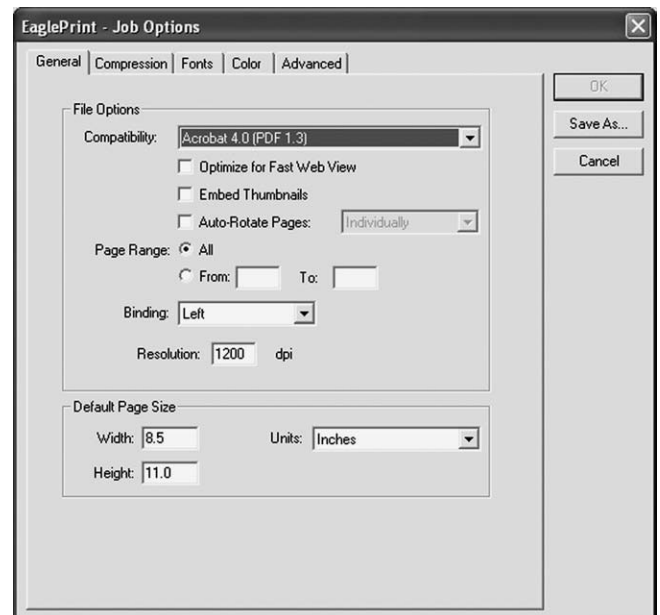
GENERAL:

Compatibility: **Acrobat 4.0 (PDF 1.3)**
 Optimize for Fast Web View: **Don't use**
 Embed Thumbnails: **Don't use**
 Auto-Rotate Pages: **Don't use**

Distill Pages: **All selected**
 Binding: **Left**
 Resolution: **1200 dpi**

Default Paper Size

Width: **8.5**
 Units: **Inches**
 Height: **11.0**



COMPRESSION:

Color Images:

Select Bicubic Downsampling to 200 dpi
 for images above: **201 dpi**
 Compression: **Select Automatic**
 Quality: **Medium**

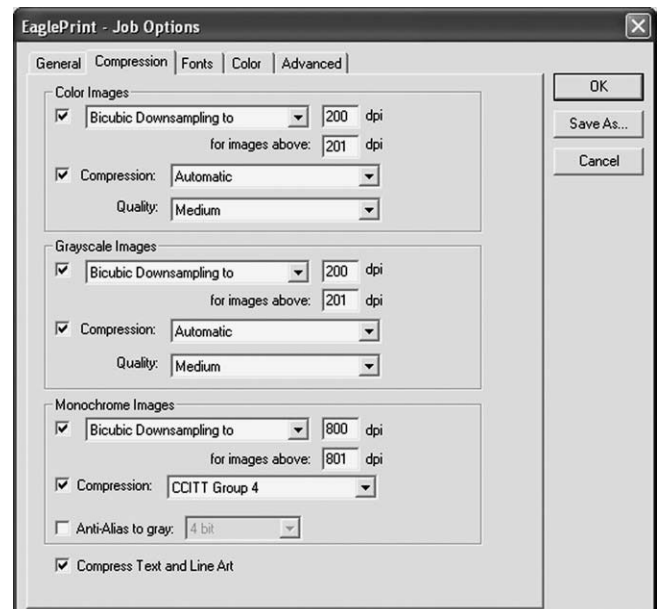
Grayscale Images:

Select Bicubic Downsampling to 200 dpi
 for images above: **201 dpi**
 Compression: **Select Automatic**
 Quality: **Medium**

Monochrome Images:

Select Bicubic Downsampling to 800 dpi
 for images above: **801 dpi**
 Compression: **Select CCITT Group 4**
 Anti-Alias to gray: **Don't use**

Compress Text and Line Art: **Select**



FONTS:

Embed All Fonts: **Select**

Subset Embedded Fonts When Percent of Characters Used is Less Than: **Don't use**

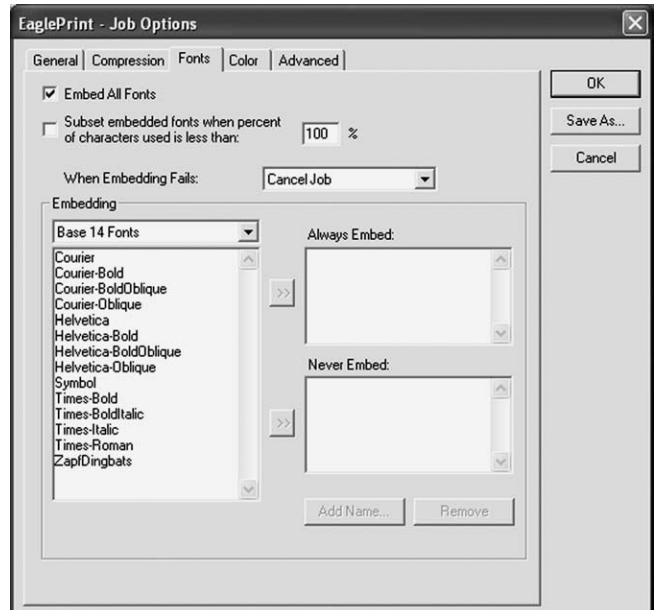
When Embedding Fails: **Cancel Job**

Embedding

Select: **Base 14 Fonts** (Distiller embeds the base 14 fonts: Courier, Helvetica, Symbol, Times, Zaph Dingbats. This includes the bold, bold oblique and oblique weights of the fonts.)

Always Embed: **None**

Never Embed: **None**

**COLOR:****Adobe Color Settings:**

Settings File: **None**

Color Management Policies: **Leave Color Unchanged**

Intent: **Default**

Working Spaces:

Gray: **Grayed out**

RGB: **Grayed out**

CMYK: **Grayed out**

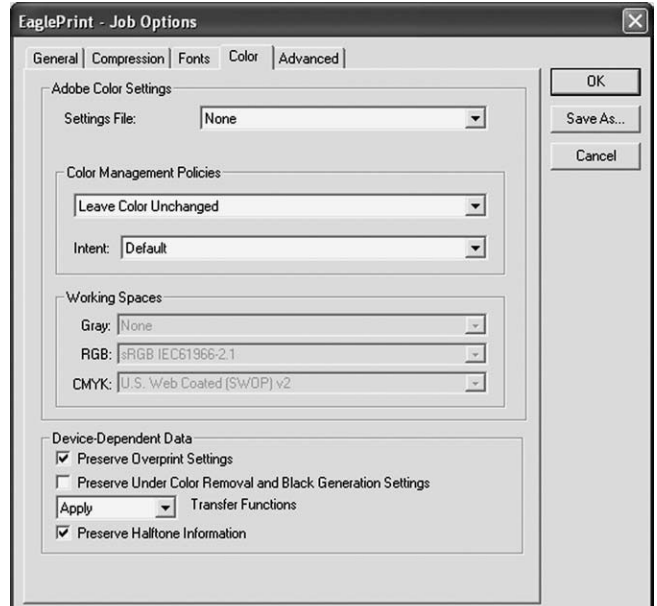
Device-Dependent Data:

Preserve Overprint Settings: **Select**

Preserve Under Color Removal & Black Generation: **Don't use**

Transfer Functions: **Apply**

Preserve Halftone Information: **Select**

**ADVANCED:****Options:**

Use Prologue.ps and Epilogue.ps: **Don't use**

Allow PostScript file to Override Job Options: **Don't use**

Preserve Level 2 copypage Semantics: **Select**

Save Portable Job Ticket Inside PDF File: **Don't use**

Illustrator Overprint Mode: **Don't use**

Convert gradients to smooth shades: **Select**

ASCII Format: **Don't use**

Document Structuring Conventions (DSC):

Process DSC Comments: **Select**

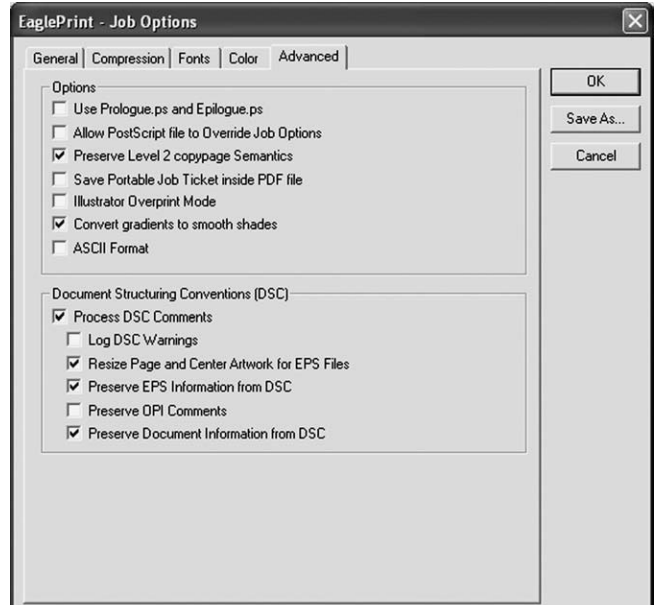
Log DSC Warnings: **Don't use**

Resize Page and Center Artwork for EPS Files: **Select**

Preserve EPS Information from DSC: **Select**

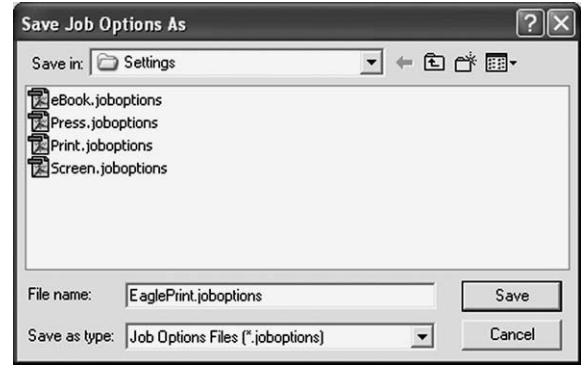
Preserve OPI Comments: **Don't use**

Preserve Document Information from DSC: **Select**

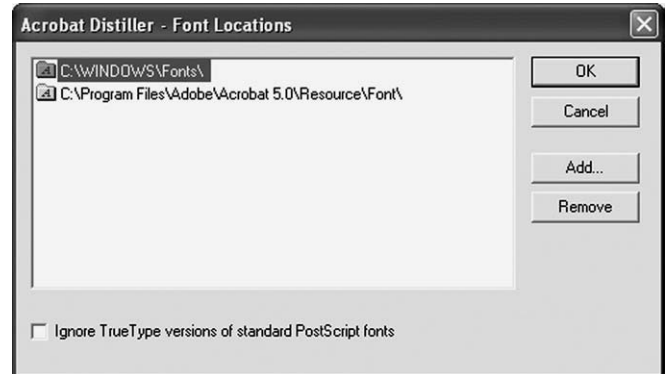


SAVE AS:

Save Job Options to the Settings folder in the Adobe folder, name this file **EaglePrint** use this file the next time you distill.

**FONT LOCATION:**

Click on Settings then Font Locations, one pictured is for a PC, but you must locate your fonts. Distiller will reference this file when creating the PDF.

**Major Problems with PDF files:**

If fonts are not embedded in the PDF, a default type could be substituted for the original.

A stylized font can sometimes cause a PostScript Error.

A RGB image will not print in color, color images must be CMYK.

Lab Images will not print.

SAVING AN EPS USING ACROBAT 6.0

File: **Save As**

Save as type: **Encapsulated PostScript (EPS)**

Select: **Settings...**

SETTINGS:

File Format Options

PostScript: **Language Level 1**

ASCII: **Select**

Include Preview: **Select (some will ask if PICT or TIFF: select TIFF)**

Page Range

Pages: **From 1 to 1**

Settings

Font Inclusion: **Embedded Fonts or All Embedded**

Raster/Vector Balance: **50**

or Transparency Quality/Speed: **Medium**

Printer Profile or Color Profile: **Same As Source (No Color Management)**

Deselect all checked boxes except (Acrobat 6):

Emit Transfer Functions

Emit Undercolor Removal/Black Generation

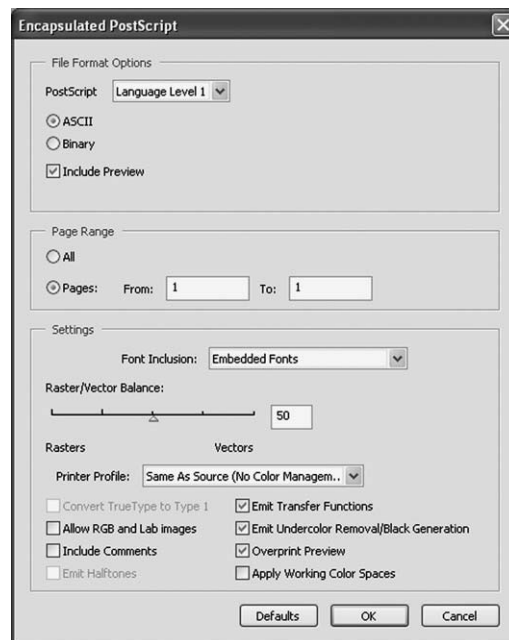
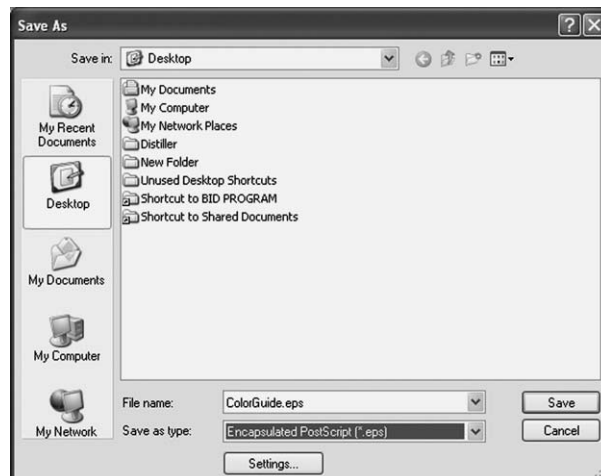
Overprint Preview

Deselect all checked boxes except (Acrobat 5):

Clip to Bounding Box and Apply Overprint Preview

Click: **OK**

Save and name EPS file into the necessary folder.



PDF DISTILLING “BEST PRACTICES”

QUARK:

Before creating the PDF file, always check the Quark file for the following:

Under the Utilities menu item in Quark,

Select: **Usage**

Pictures

All pictures status should show “OK”

If the picture status shows “Missing” or “Modified”, update the files. Files not updated will bitmap.

If you click on “More Information” this will also give you a description of the picture (whether it’s RGB or CMYK). **RGB images will either print in grayscale or on all plates.** Color images must be CMYK.

Fonts

Confirm the fonts are not stylized

PAGEMAKER:

Before creating the PDF file, always check the PageMaker file for the following:

Under File,

Select: **Links Manager**

All picture status should show “up to date”. There shouldn’t be any question marks by any images.

If the picture status shows “Missing” or “Modified”, update the files. Files not updated could bitmap.

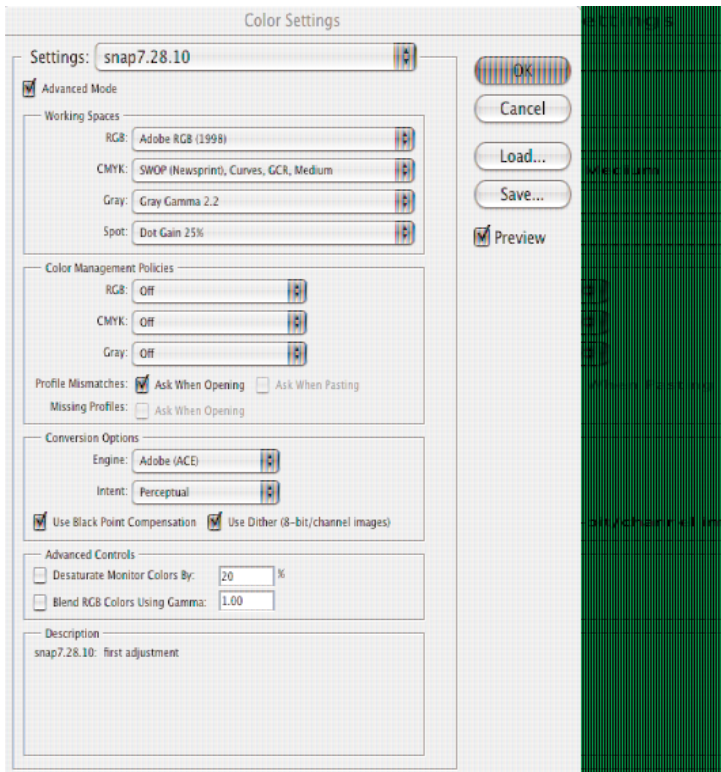
Color images must be CMYK. **RGB images will either print in grayscale or on all plates.**

Under Utilities, Plug-ins, Select: **Save for service provider**

Select: **Preflight Pub**

This will preflight your publication and check artwork and fonts, after it’s finished, you should have a green check for pictures and fonts, if a red X appears, then you need to fix the problem.

EAGLE PRINT PHOTOSHOP SETTINGS



1. Under the photoshop tab select: color settings
2. In the working spaces select: CMYK drop down menu
3. Select: custom CMYK
4. In the ink options select: curves from dot gain drop down menu.

5. Open each color channel and input the following percentages.

6. Name and save your settings when finished.

